

ThorPak[®]

Solution/Steel

These (foldable) large load carriers / steel frames are particularly suitable for transportation of sensitive components. In combination with pocket systems, foam inlays, compartments, textile pockets, deep-drawn intermediate layers and tooth strips, this system can be used extremely flexible and versatile.



Numbered storage compartments with foldable curtain

Top-Front-Loader

All storage compartments and compartments can be adjusted individually to the packed product.



Individual compartments for moving

Loading flap with hook-and-loop fastener

Collision guard

Systems

- Textile
- Foam
- Compartments
- Tray
- Steel

Front-Loader Light S 0806

All storage compartments and compartments can be adjusted individually to the packed product. The components can be manufactured from various materials (even suitable for sensitive and components that are not scratch resistant).

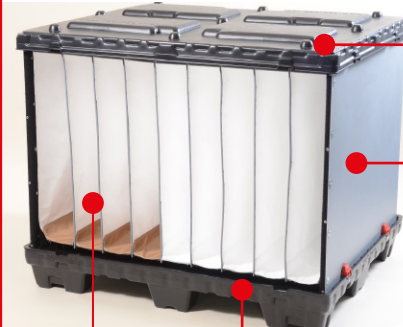


- Cover SingleSheet HDPE riveted fixed with the ring
 - Sleeve made of 10/3000 PP with individual print
 - Pallet SingleSheet HDPE riveted fixed with the ring
 - Collision guard
- Front-Loader with storage compartments and foldable curtain

Front-Loader door panel

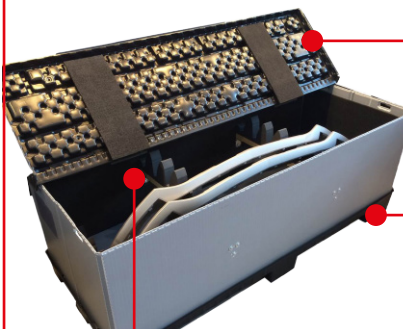
Medium T 1210

Receptacles of the components in the textile system floor element exchangeable.



- Cover, TwinSheet HDPE
 - Locator for locking the pallet with the sleeve
 - Pallet, TwinSheet HDPE
- Front-Loader system without front panel (also available with removable front panel)

Top-Loader with foam compartments



- Cover SingleSheet HDPE with hinge
 - Pallet SingleSheet with 2 steel reinforcements under the pallet
- Special aluminum frame with foam compartments in order to guarantee the optimum transport of sensitive components

Top-Loader-System

Textile compartment system with curtain



- Top-Loader-System
 - Return ring in which the foldable ring and the compartment can be folded together for transport (sandwich system)
 - Full container ring with M-fold
- Pallet TwinSheet HDPE with locaters

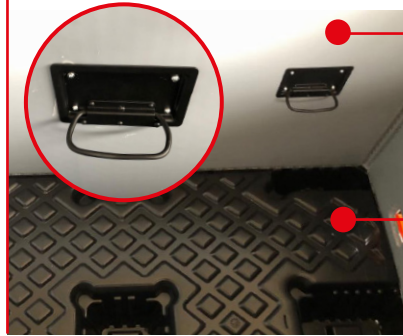
Container with trolley

Can be folded in the middle



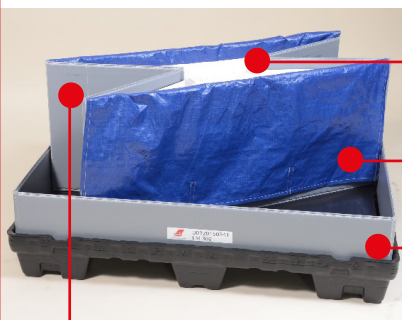
- 4 side panels, foldable
- Lockable flaps

wi-sales collapsible frame and Aircell® intermediate layers



- wi-sales collapsible frame can be mounted individually and customer-specific to every height in the container
- Aircell® intermediate layers available in many different versions

Top-Loader with textile compartments and curtain

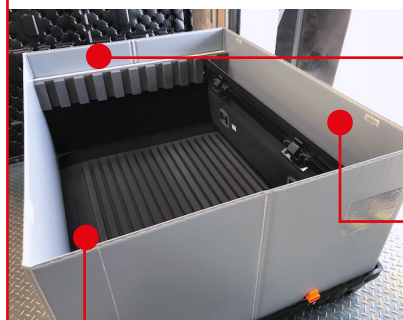


- Textile compartments remain clean when folded
- Full goods container ring fold with textile
- Full goods ring mount and compartments with empty goods ring

Reduced volume returns

Top-Loader for sensitive components

Return transport (empty) with collected interior equipment in a standing box (4 boxes folded together, 1 standing)

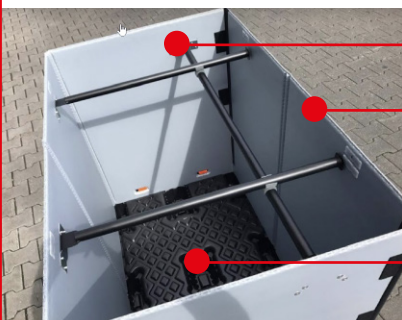


- Foam on HKP – all parts removable
- Standard system MT 1612 foldable

Scratch-resistant version

Top-Front-Loader

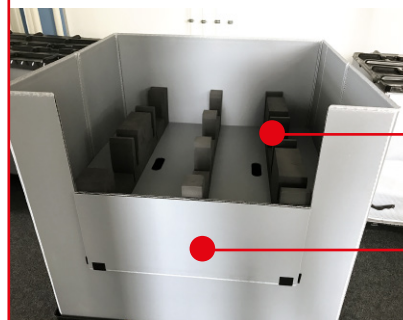
System 1208 with steel reinforcements for accommodating suspended components



- Steel beams anchored to the ring
- Removable front longitudinal side
- Reduced volume returns due to the folding

Top-Loader

Foam on Aircell panels



- Foam glued onto the Aircell panel
- TP MT with large loading flap